

## PROFESSIONAL-GRADE REPORTING FOR ALL EMPLOYEES

### WHAT'S NEW IN CRYSTAL REPORTS® 2008

Crystal Reports® 2008 software is a powerful, dynamic, and actionable reporting solution that helps you design, explore, visualize, and deliver reports via the Web or built into enterprise applications. Users can consume reports with stunning visualizations, conduct on-report business modeling, and execute decisions instantly from the report itself – reducing dependency on IT and developer resources.

With Crystal Reports 2008, you can:

- Empower users to explore reports interactively
- Create compelling reports with stunning visualizations
- Develop powerful data mashups
- Save valuable report-design time
- Enjoy comprehensive report deployment options and an improved report designer

#### Interact: Empower Users to Explore Reports Interactively

The following functions improve a user's experience:

**Adobe Flash integration** – Import Shockwave Flash (SWF) files generated from Xcelsius® Engage software into your reports and benefit from improved design-time integration and visualizations. Enhance reports with what-if models that enable users to make important decisions dynamically without leaving the report file.

**Adobe Flex integration** – Integrate reports with operational workflows by building Adobe Flex applications into reports. Using Adobe Flex Builder, you can create a user interface (UI) to

access report data and to integrate with external Web services. Data in a report can be passed to Adobe Flex via FlashVars, making it easy to create a flexible UI even when you don't have access to your data via Web services. Adobe Flex can do tasks like database write-back – invoking operational workflows directly within Crystal Reports.

**Parameter panel** – The report designer and Windows Forms and Web Forms viewers have a parameter panel so that parameter values can be set without refreshing data. Report designers build panels into their reports prior to publishing them. Parameters are displayed on the panel so that report consumers can see them easily, make changes, and have the new values applied directly to the saved data.

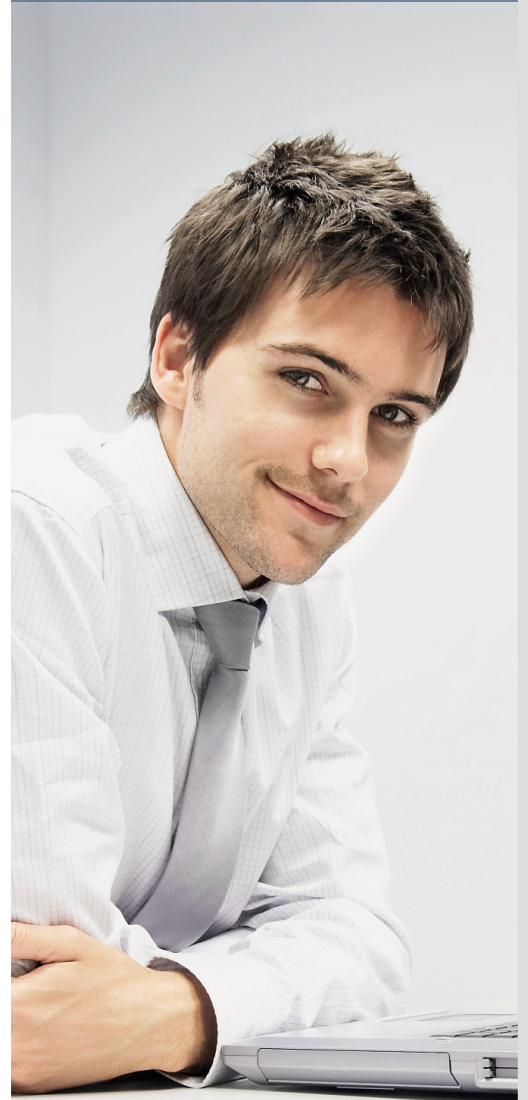
**Interactive report viewing** – On-report sorting, filtering, and reformatting with Windows Forms and Web Forms viewers allow users to explore information interactively without querying the database again. New optional parameters provide for complex, user-driven filtering scenarios. Users can answer more questions with fewer, more flexible reports – significantly reducing dependency on developer and IT support. Filtering panels and sorting buttons can be built into the report as needed.

#### Visualize: Create Reports with Stunning Visualizations

The following functions help designers create dynamic, powerful reports:

**Adobe Flash integration** – A wide variety of data presentation options

Recent enhancements in Crystal Reports® 2008 software enable you to create compelling reports with stunning visualizations, enjoy comprehensive report deployment options, and enable better-informed decisions for all employees while saving development time with improved, integrated report-design tools.



are now available through Adobe Flash. SWF files can be integrated into a report (either built in or linked via a Web site), and report data can be shared with SWF via FlashVars for compelling, interactive, and information-rich reports.

**Powerful crosstab function** – Summary, variance, and other calculations can be inserted into a crosstab row or a column, which is useful for reports that benefit from a table structure. The crosstab table structure makes reports much faster to build and maintain. This function provides powerful features for crosstab-based charts, since custom formulas in the crosstab can be visualized within charts.

**Flexible pagination** – Report designers can customize page size and page breaks. A single report can combine portrait and landscape page formats, and the white space at the end of groups can be removed by compressing page footers. Online report consumption is improved because reports are easier to read.

### Design: Develop Powerful Data Mashups

The following functions enable data to be pulled from heterogeneous sources:

**Integration with Xcelsius Engage, Adobe Flex, and Adobe Flash** – Developers can produce powerful mashups (hybrid Web applications) by pulling data from various sources. They can integrate components designed in Adobe Flash and Adobe Flex without any coding and significantly expand the scope of application deployment.

**Web services data driver** – Integrating with various Web services can be difficult and complex due to a variety of implementation types. This new data driver offers additional Web access to Web services by providing support for remote procedure call (RPC) encoding of SOAP messages, SSL-secured Web servers, and compatibility with Web Services Security (WS-Security) protocol. It adapts to custom logon requirements such as e-mail address or user name and password. Developers combine the flexibility of XML and Web services with report formatting and visual-

Crystal Reports software enables users to consume reports with stunning visualizations, conduct on-report business modeling, and execute decisions instantly from the report itself – reducing dependency on IT and developer resources.

ization to deliver reports that link data to interactive data mashups, such as integration with third-party mapping systems.

### Design: Save Valuable Report-Design Time

The following functions enable designers to work faster and smarter:

**Built-in bar-code support** – Report designers can generate bar codes with only a few mouse clicks by using the

new “turn to bar code” function in the context menu. They can convert fields to Code 39 bar codes without any coding or extra steps. Additional bar-code fonts are available from third-party vendors.

**Enhanced designer features** – Designers can be more productive with features like global formula search, duplicate formula, duplicate running total, autocomplete field names, and the “find in field explorer” feature.

**Hyperlinking wizard** – Designers save time by automatically creating the Crystal Reports formula required to invoke an SAP® BusinessObjects™ Enterprise software hyperlink (functionality provided in Crystal Reports 2008, service pack 0).

**Single edition** – Crystal Reports 2008 comes in a single edition that provides quick access to the features you need to meet any application and user requirement. Report samples and developer documentation are available as free, optional downloads.

**Multilingual reporting** – During product installation, you can choose a working language by selecting the language packs you want and then switching the report designer UI to use any of the installed language packs. Report-content locale can be set explicitly for each report file. This setting controls sorting, grouping, and formatting that matches the local language customs and conventions.

**Reduced install footprint** – The download size has been reduced to 250 MB to provide fast access via the download site. Runtime files included in developer applications are also significantly smaller.

## Deploy: Enjoy Comprehensive Deployment Options

The following functions provide multiple ways to deploy reports:

**Advanced report publishing** – You can publish personalized reports such as invoices, statements, and marketing materials to thousands of recipients in a single publishing session. Also known as report bursting, advanced report publishing allows IT personnel to create multiple reports based on different data sources, personalized for each recipient, combined into a single file (such as Adobe PDF), and distributed to a dynamic list of recipients – all with a single action. Content can be archived, printed, or e-mailed. This makes scheduling fast and easy and gives you the ability to conduct cost-effective one-on-one marketing campaigns and personalized high-volume reporting. Report publishing is available when using Crystal Reports 2008 with SAP BusinessObjects Enterprise 3.0 software (service pack 0).

### Web-based report sharing –

Expand your deployment options with on-demand reporting when you open and save reports directly to [crystalreports.com](http://crystalreports.com) – our on-demand reporting solution. This new integration allows you to manage and share your reports securely without relying on IT.

### Integrated Salesforce.com driver –

The Salesforce.com driver included with Crystal Reports 2008 provides easy access to complete customer data – turning it into actionable business information. Reports that use a Salesforce.com driver refresh when deployed to [crystalreports.com](http://crystalreports.com).

**Improved XML exporting** – You can render reports in almost any format and enjoy faster and easier integration with industry-specific business processes – without any custom coding. Extensible style sheet language transformations (XSLT) are embedded in the report file and are triggered by users from within the viewer when exported to XML. This provides a powerful, flexible hook for transforming Crystal Reports data and integrating it into other applications.

**.NET report modification software development kit (SDK)** – The report application server (RAS) SDK is now available for users of Crystal Reports .NET application programming interface (API) without the use of a RAS. Report modification, such as changing, adding, or removing database providers or adding, removing, or creating report objects, parameters, formulas, and sections, can be achieved by accessing the RAS SDK through the .NET SDK.

**Java runtime engine** – Crystal Reports, version for Eclipse, is a separate download that includes a Java runtime engine optimized for deploying Crystal Reports 2008 RPT files in your Java application. It supports both thick-client and Web applications and includes an integrated development environment (IDE) tool for the Eclipse IDE, a Java runtime engine, and a simple report-design tool integrated into the Eclipse IDE.

### Web applications for external use –

External distribution of Web applications embedding the runtime engines is now available for one fixed price with

Crystal Reports 2008 Developer Advantage software, the new Crystal Reports runtime license.

## What's Changed

We've made the following changes to Crystal Reports 2008:

- To reduce download time, **report samples and the sample database** are accessed through separate downloads on the start page of Crystal Reports 2008, as are **.NET developer documentation, merge modules, and MSI files.**<sup>1</sup>
- The **report developer component** is not supported in Crystal Reports 2008. Developers wishing to use Crystal Reports in a component object model (COM) application should use the precursor of Crystal Reports 2008 (Crystal Reports XI, release 2). The ActiveX viewer remains a fully supported component.
- **Advanced dynamic HTML (DHTML) viewers** have been removed from Crystal Reports 2008 because improvements to DHTML viewers make additional viewers unnecessary.
- **Java Reporting Component (JRC) and Java SDK documentation** are available through the free download for Crystal Reports, version for Eclipse.

## Find Out More

To learn more about Crystal Reports 2008, call your SAP representative or visit us online at [www.sap.com/sapbusinessobjects](http://www.sap.com/sapbusinessobjects).

1. Installation packages for Windows Installer (previously known as Microsoft Installer) are informally known as MSI files.

---

## Summary

Crystal Reports® software is an intuitive reporting solution that helps you create flexible, feature-rich, and dependable reports that can be integrated into both thick-client and thin-client applications.

---

## Business Challenges

- Reduce dependency on IT staff for report design, development, and deployment
- Give users the ability to easily visualize the potential outcome of business decisions
- Expand access to data over the Web
- Add business-critical information to reports without coding

---

## Key Features

- **Report design** – Create highly formatted, interactive, and professional-looking reports using a complete set of layout tools and design controls
- **Application development** – Leverage cross-platform support for both Java and .NET, allowing developers to focus on application business logic rather than tedious, time-intensive coding
- **Report delivery** – Export reports to popular formats, such as Adobe PDF, Microsoft Office, and RTF

---

## Business Benefits

- **Save valuable design time** with a stand-alone report designer or a design tool integrated within Microsoft Visual Studio 2008 without leaving the development environment
- **Provide a flexible development environment** with separation of application development and report-design tasks so that developers can focus on application development while report authors can focus on report design
- **Increase report use** by creating compelling reports with stunning visualizations
- **Enable faster, better-informed decisions** at all levels of the organization with interactive report exploration and controlled sharing, because reports can be previewed in HTML and published to the Web

---

## For More Information

Call your SAP representative, or visit us online at [www.sap.com/sapbusinessobjects](http://www.sap.com/sapbusinessobjects).

50 093 219 (09/01)

©2009 by SAP AG.

All rights reserved. SAP, R/3, SAP NetWeaver, Duet, PartnerEdge, ByDesign, SAP Business ByDesign, and other SAP products and services mentioned herein as well as their respective logos are trademarks or registered trademarks of SAP AG in Germany and in other countries.

Business Objects and the Business Objects logo, BusinessObjects, Crystal Reports, Crystal Decisions, Web Intelligence, Xcelsius, and other Business Objects products and services mentioned herein as well as their respective logos are trademarks or registered trademarks of Business Objects S.A. in the United States and in other countries. Business Objects is an SAP company.

All other product and service names mentioned are the trademarks of their respective companies. Data contained in this document serves informational purposes only. National product specifications may vary.

These materials are subject to change without notice. These materials are provided by SAP AG and its affiliated companies ("SAP Group") for informational purposes only, without representation or warranty of any kind, and SAP Group shall not be liable for errors or omissions with respect to the materials. The only warranties for SAP Group products and services are those that are set forth in the express warranty statements accompanying such products and services, if any. Nothing herein should be construed as constituting an additional warranty.